

MLS Area HS

Residential Statistics



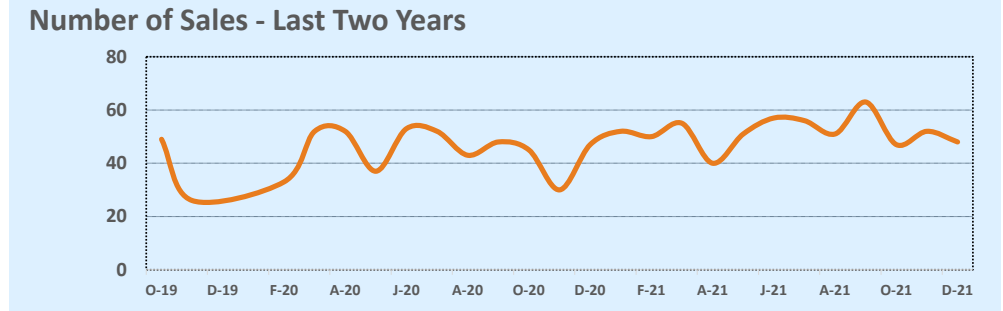
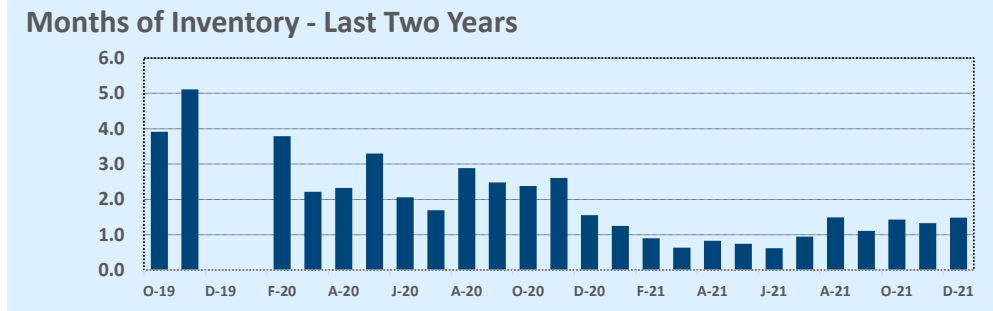
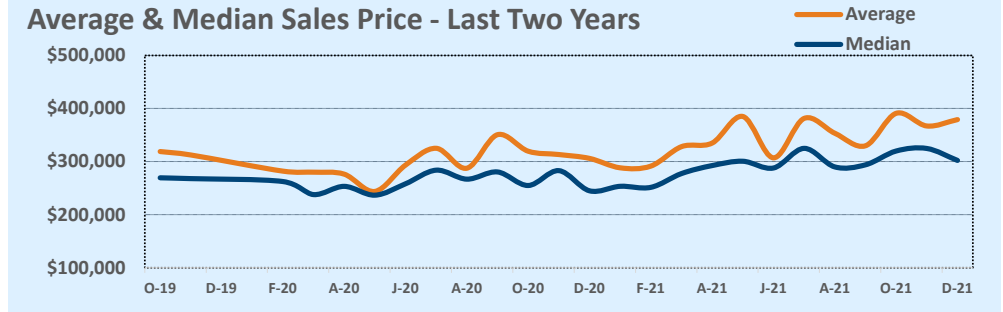
November 2021

Listings	This Month			Year-to-Date		
	Nov 2021	Nov 2020	Change	2021	2020	Change
Single Family Sales	44	45	-2.2%	571	486	+17.5%
Condo/TH Sales	4	2	+100.0%	51	32	+59.4%
Total Sales	48	47	+2.1%	622	518	+20.1%
New Homes Only	9	8	+12.5%	90	77	+16.9%
Resale Only	39	39	--	532	441	+20.6%
Sales Volume	\$18,200,742	\$14,385,960	+26.5%	\$214,003,123	\$155,224,303	+37.9%
New Listings	39	36	+8.3%	764	591	+29.3%
Pending	65	10	+550.0%	208	473	-56.0%
Withdrawn	3	7	-57.1%	48	45	+6.7%
Expired	--	--	--	--	--	--
Months of Inventory	1.5	1.6	-4.8%	N/A	N/A	--

Price Range	This Month			Year-to-Date		
	New	Sales	DOM	New	Sales	DOM
\$149,999 or under	--	--	91	15	17	41
\$150,000- \$199,999	3	4	51	51	45	18
\$200,000- \$249,999	5	6	13	91	110	26
\$250,000- \$299,999	8	13	15	191	163	24
\$300,000- \$349,999	19	7	13	140	100	24
\$350,000- \$399,999	11	7	24	80	47	30
\$400,000- \$449,999	5	5	14	53	48	34
\$450,000- \$499,999	4	2	212	32	21	51
\$500,000- \$549,999	1	2	19	21	14	41
\$550,000- \$599,999	2	--	--	21	10	83
\$600,000- \$699,999	3	3	44	18	19	64
\$700,000- \$799,999	3	2	5	28	16	24
\$800,000- \$899,999	1	1	12	6	3	12
\$900,000- \$999,999	--	--	--	3	2	10
\$1M - \$1.99M	1	--	--	11	5	13
\$2M - \$2.99M	--	--	--	3	2	18
\$3M+	--	--	--	--	--	--
Totals	39	48	20	764	622	29

Average	This Month			Year-to-Date		
	Nov 2021	Nov 2020	Change	2021	2020	Change
List Price	\$377,624	\$310,175	+21.7%	\$339,833	\$307,075	+10.7%
List Price/SqFt	\$245	\$162	+51.6%	\$189	\$160	+18.4%
Sold Price	\$379,182	\$306,084	+23.9%	\$344,056	\$299,661	+14.8%
Sold Price/SqFt	\$245	\$160	+53.3%	\$192	\$156	+22.7%
Sold Price / Orig LP	102.4%	99.0%	+3.4%	102.9%	97.0%	+6.0%
Days on Market	20	57	-65.0%	29	69	-58.4%

Median	This Month			Year-to-Date		
	Nov 2021	Nov 2020	Change	2021	2020	Change
List Price	\$298,995	\$245,575	+21.8%	\$285,000	\$260,995	+9.2%
List Price/SqFt	\$194	\$168	+15.7%	\$177	\$153	+15.4%
Sold Price	\$302,238	\$245,000	+23.4%	\$293,241	\$257,903	+13.7%
Sold Price/SqFt	\$198	\$166	+19.5%	\$181	\$151	+19.6%
Sold Price / Orig LP	102.0%	100.0%	+2.0%	101.0%	99.0%	+2.0%
Days on Market	7	26	-73.1%	8	34	-76.5%



Based on information from the Austin Board of REALTORS® (alternatively, from ACTRIS). Neither the Board nor ACTRIS guarantees or is in any way responsible for its accuracy. The Austin Board of REALTORS®, ACTRIS and their affiliates provide the MLS and all content therein "AS IS" and without any warranty, express or implied. Data maintained by the Board or ACTRIS may not reflect all real estate activity in the market.